

Model **BK200MINI**

Auto Chemistry Analyzer

Best solution for modern laboratory



BIOBASE®

Specifications

Overall Performance	Throughput	200 Tests/hour
	Analysis Method	End-point, Fixed-time, Rate(Kinetic)
	Certificates	CE, FDA, ISO9001, ISO14001, ISO13485
Sample & Reagent System	Sample Positions	37 sample positions
	Reagent Positions	28 reagent positions
	Sample Volume	2~70µl
	Reagent Volume	20~350µl
	Probe	Liquid level sensor function, anti-collision function
	Probe Washing	Automatic washing interior and exterior
	Reagent Cooling	Refrigerated tray with independent switch
Reaction System	Temperature Control	37±0.1℃, real-time monitoring
	Cuvettes	48 reusable cuvettes, optical length 6mm
	Mixer Probe	Independent stirring
	Washing	Automatic cuvettes washing
	STAT Function	YES
Optical System	Light Source	6V/10W halogen lamp
	Spectrophotometry	Post-spectral spectrophotometry
	Wavelength	340, 405, 450, 510, 546, 578, 630, 700nm
	Absorbance	0~3.0Abs
Calibration & QC	Calibration	Linear: K factor, 1-point, 2-point and multipoint linear Non-Linear: Spline, Polygon, Index, Ogarithm, Logit-4P, Logit-5P
	Quality Control	Real-time QC, Westgard multi rule, Cumulative sum check, Twin Plot(2D)
Data Management	Software	Windows 7/8/10, 32 or 64 bit
	LIS System	Bi-direction, support HL7 protocol
	Interface	LAN port access
	Printer	External, multiple reporting mode available
Working Conditions	Power Supply	AC220V±10%, 50/60Hz, 110V±10%, 60Hz, 300W
	Temperature	10℃~30℃
	Water Consumption	Deionized water: 3L/H
	Humidity	30~80%
Size & Weight	External Size (W*D*H)	625*425*460mm
	Net Weight	36kg
	Package Size (W*D*H)	720*535*740mm
	Gross Weight	50kg

Biobase Biodustry(Shandong) Co., Ltd

Add: No.51 South Gongye Road, Jinan, China

Tel: +86-531-81219803/01

Fax: +86-531-81219804

Email: export@biobase.com

Website: www.biobase.com

BIOBASE®

High quality performance bench-top

Features:

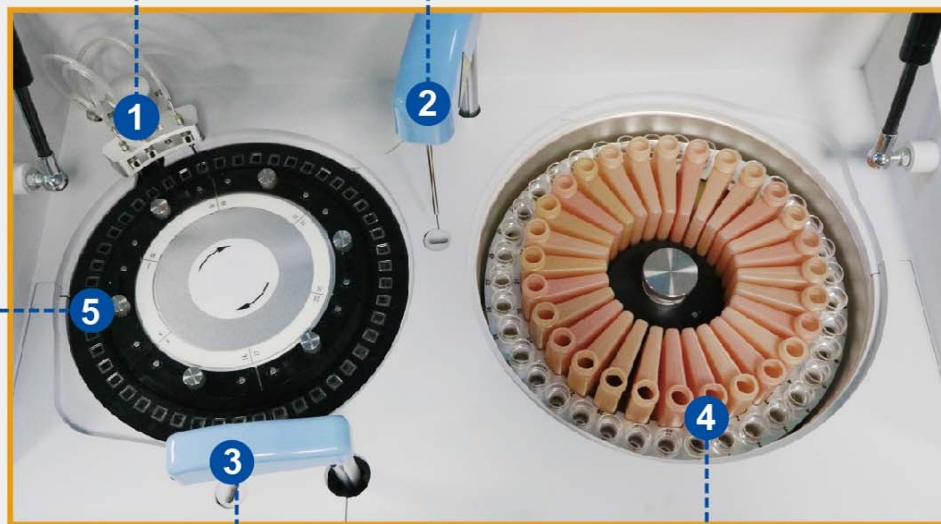
- ①. 37 Sample positions
- ②. 28 Reagent positions
- ③. 48 Reaction cuvettes
- ④. 200 Tests per hour
- ⑤. Probe anti-collision function



1 Washing Probe
Independent 2-step washing system.

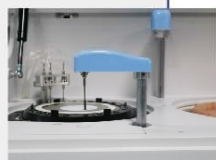


2 Sample Needle
Liquid level sensor function. Anti-collision function. Reagent volume real-time detection.



3 Mixer Probe
Teflon coating to avoid cross contamination.

4 Reagent Tray
Refrigerated tray with independent switch.



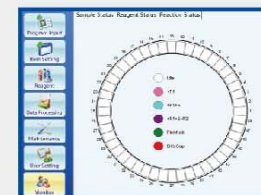
6 LAN Port Access

5 Reaction Tray
37 C ± 0.1 C, real-time monitor.



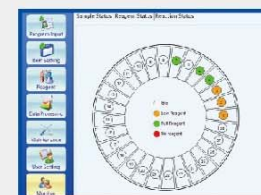
01 Real-time Monitor

Real-time shows Sample, Reagent and Reaction status



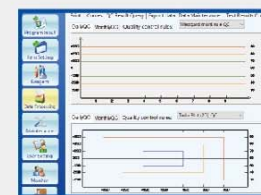
02 Quality control

Daily, monthly QC results with various quality control rules



03 Calibration

Calibration with various type, easy to set and manage.



04 Results

Results can be displayed with curve, and record automatically.

